

*Fully Programmable  
Display and Recorder*

Indicators  
Translators



Model 26800  
**Meteorological Translator**



***The Model 26800 Meteorological Translator offers a unique and flexible solution for meteorological data measurement, recording and display.***

Advanced design has features and flexibility to perform a wide variety of monitoring tasks. From simple display of a single variable to recording data from a complete sensor suite, the 26800 can satisfy countless measurement needs.

### High Resolution Display

The 26800 features a large, high-contrast LCD screen. The display text and layout are fully programmable so measured data can be displayed in a wide variety of formats. Up to 8 screens may be used. Display illumination is easily adjusted for best viewing in any light.

### Practical Design

Compact configuration is easily panel mounted (no additional hardware required). Adjustable stand permits table top use as well.

### Fully Programmable

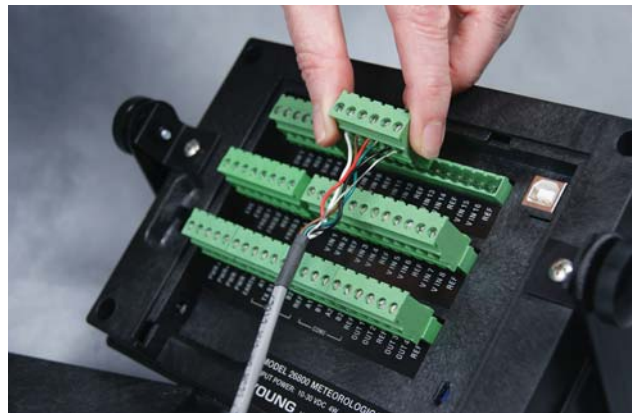
The real strength of the 26800 is the ability of the user to custom program the device to perform virtually any task. A user-friendly PC program allows easy formatting of the program parameters, display screens and recording functions. Programming is also possible using front panel controls when a PC is unavailable.

### Data Storage

The 26800 has built-in memory for storage of large amounts of recorded data. More than 2 million data points may be stored. Data retrieval is simplified by the handy communication program provided.

### Wide Variety of Inputs

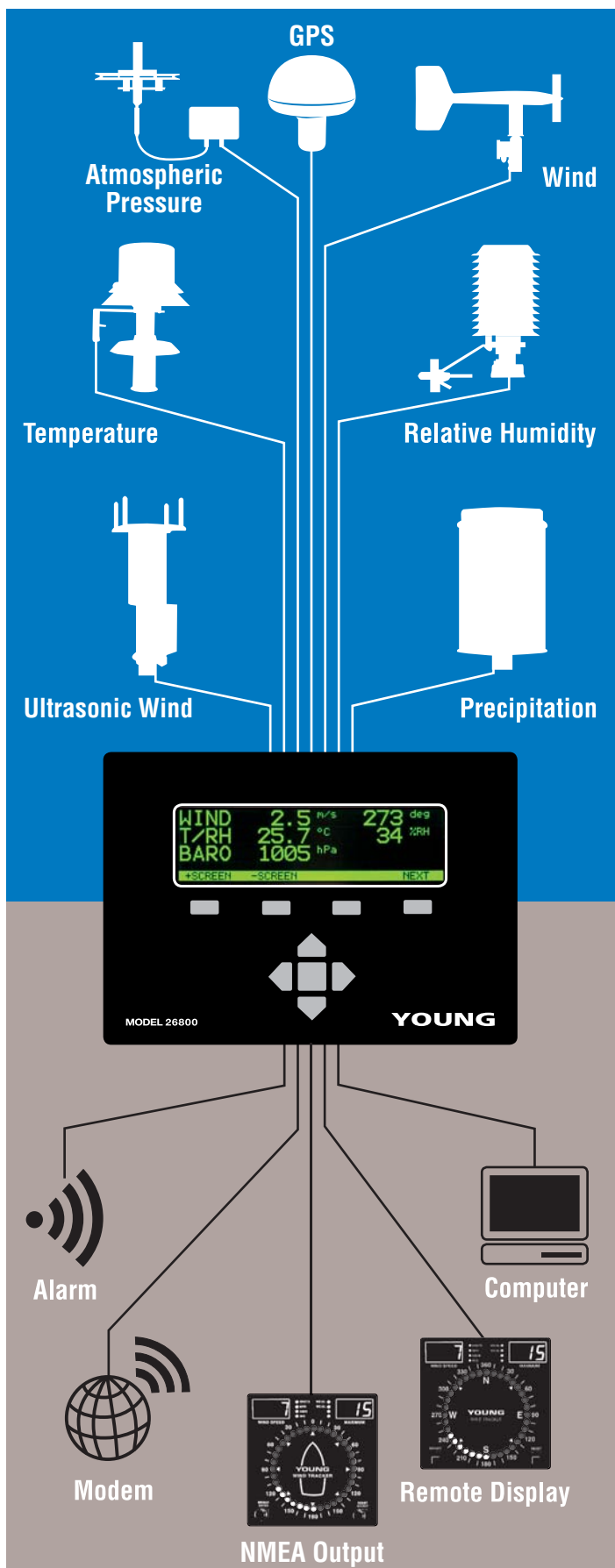
The 26800 is supplied with a large selection of sensor inputs. Wind, temperature, precipitation, humidity and other sensors are easily connected through the removeable terminals. Frequency, voltage, current loop and serial inputs are provided. All values are completely scalable in the program.



### Useful Outputs

Many output options are available from the 26800. Terminals are available for calibrated voltage outputs and current outputs as well as serial outputs. Switched outputs provide alarm capability.

# Model 26800 Meteorological Translator



The 26800 is compatible with a wide variety of sensors and accessory devices. Terminals for all functions are readily available on the back panel. Convenient, plug-in terminal blocks simplify wiring and service needs after installation.

## **Capabilities of the 26800 include the following:**

### **Wind Speed and Direction Input**

Conventional wind inputs such as frequency and analog voltage signals are accommodated. Potentiometer excitation is provided for direction sensors.

### **Temperature Inputs**

Connections for temperature devices, including platinum RTDs and thermistors, are made through back panel terminals.

### **Voltage Inputs**

Up to 16 voltage inputs are available allowing connection of humidity sensors, barometers, pyranometers and other devices. Many scaling options are available.

### **Current Inputs and Outputs**

4-20 mA current loop systems are no problem when long cable lengths or noisy industrial settings are present.

### **Voltage Outputs**

High resolution voltage outputs allow operation of chart recorders and other external devices.

### **Alarm Outputs**

Four low-level control outputs are provided to allow alarm actuation or relay control.

### **Serial Connections**

Both RS 232 and RS485 connections are available allowing easy communication with PCs and other devices.

### **NMEA Input and Output**

Advanced design allows for input from GPS receivers and other navigation devices. Applications include display and output of true wind speed, and wind direction on mobile platforms.



## Specifications

### SIZE AND WEIGHT

Dimensions	200 mm (7.8 in) x 144 mm (5.7 in) x 54 mm (2.1 in)
Panel Cutout	194 mm (7.6 in) x 138 mm (5.4 in)
Weight	0.8 kg (1.8 lb)

### TEMPERATURE

Operating Temperature	0 °C to +50 °C
Storage Temperature	-30 °C to +50 °C

### DISPLAY

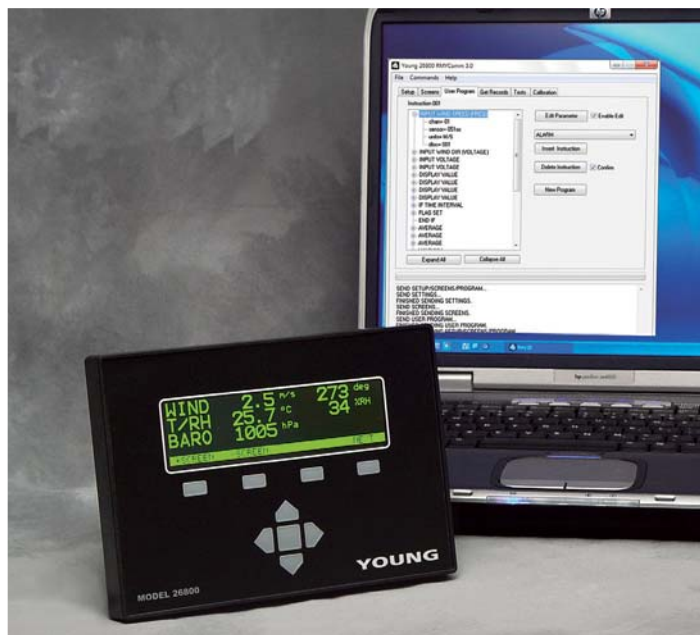
Adjustable high-brightness, high-contrast with 8 user programmable screens. Large font capacity: 3 rows x 20 characters per screen. Small font capacity: 6 rows x 40 characters per screen. Both font sizes may be used together on the same screen.

### POWER

Nominal +12 VDC at 90 mA with mid-level backlight  
+10 to +30 VDC at 2.4 W max  
Terminals or coaxial jack for AC-power adapter (included).

### MEMORY

2,162,688 Single-precision floating point values for data records  
256 Temporary floating point values for user program  
1 to 512 user program instructions



The 26800 is fully programmable and includes RMYComm software for setup and data transfer.

### VOLTAGE INPUT

Channels	7 differential or 16 single-ended inputs in any combination
Measurement Range	-5 to +5 VDC
Resolution	16 bits minimum
Conversion Rate	4.7 Hz to 4800 Hz in 10 steps
50/60 Hz Rejection	Greater than 90 db at 4.7 Hz sampling rate
Accuracy	±0.1%, 0 °C to +40 °C

### PULSE / FREQUENCY INPUT

Channels	4 Inputs for low level AC or switch closure/TTL
Range	0 to 2500 Hz
Threshold	50 mV p-p for low level AC input +2.5 VDC for switch closure/TTL

### EXCITATION

Channels	2 Outputs. Regulated +5 VDC reference voltage at 10 mA
----------	---

### VOLTAGE / CURRENT OUTPUT

Channels	4 Outputs as voltage or current output
Range	Voltage 0 to +5 VDC, current 0 to 20 mA
Resolution	1 part in 4000 (1.25 mV or 0.005 mA)

### SERIAL I/O

COM1	RS-485 or RS232 1200 to 230,400 Baud
COM2	RS-485 only 1200 to 230,400 Baud
USB	USB for stored data and user program trans- fer via Young RMYComm only.


### SWITCH OUTPUT

Channels	4 Solid state switch outputs
Rating	60 VDC at 5 A per switch

## Ordering Information

## MODEL

METEOROLOGICAL TRANSLATOR .....	26800
<i>Includes: Universal AC adapter (100 - 240 VAC), USB cable, RMYComm software.</i>	
RACK MOUNTING PANEL (19") .....	26880

 Complies with applicable CE directives.  
Specifications subject to change without notice.

Copyright © 2012 R.M. Young Company. Specifications subject to change without notice. Printed in U.S.A. 2/12



**R.M. YOUNG COMPANY**  
2801 Aero Park Drive  
Traverse City, Michigan 49686 USA  
TEL: (231) 946-3980 FAX: (231) 946-4772  
E-mail: met.sales@youngusa.com  
Web Site: www.youngusa.com

 **KRITECH & Co sprl**  
Meteorology - Hydrology - Air & Gasflow  
Gewerbestrassse 1 - B 4731 Raeren  
Tel. +32 (0)87 85 04 78 - info@kritech.be