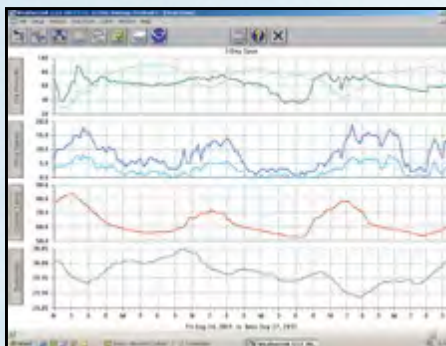
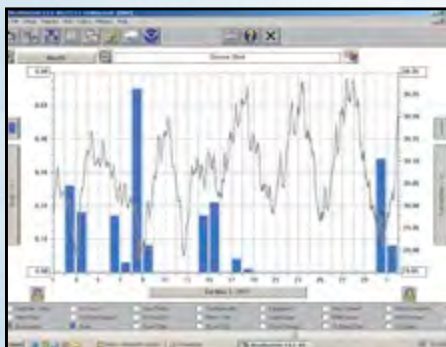


Your weather data, your computer. What could be better?

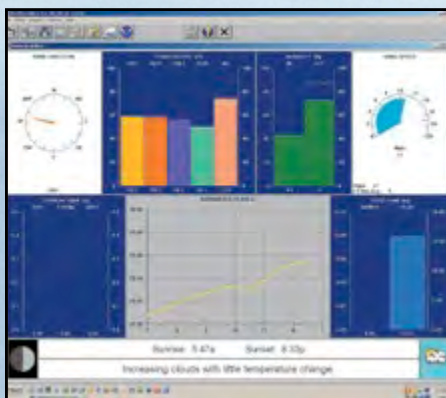
For the ultimate in weather monitoring, add WeatherLink software and data logger to any of our weather stations. The data logger fits neatly into your Vantage Pro2 or Vantage Vue console; or Weather Envoy or Envoy8X to collect and store your weather data. Connect the data logger to your computer to download the data to the software for detailed analysis and graphing. Choose our popular WeatherLinkIP model to automatically upload to the WeatherLink Network or see the chart on page 22 to determine which of our eight models is best for you.



Graph data on a daily, weekly or yearly basis.



View multiple weather variables at the same time to see their relationships.



Check current conditions at a glance on the instant weather bulletin.

Expanded Reporting

- **More Weather Data.** View weather information not available on the console, including heating/cooling degree days and fuel-oil demand.
- **Optional Sensor Reporting.** With optional UV and solar radiation sensors, get details on sunburn risk and solar energy.

Sharing Your Weather Data

- **Create Your Own Reports.** Data can be exported to most popular spreadsheets, databases and word processing programs.
- **Weather Website.** Create a weather website or post weather conditions to a LAN. Add graphs, text lines or scrolling ticker-tapes, and upload other files (such as webcam images) along with weather data.
- **Citizen Weather Observer Program.** Submit your data to the National Weather Service to help develop improved weather prediction models. www.wxqa.com
- **The GLOBE Program.** Participate with other elementary through high schools in an international weather-related program. www.globe.gov

Data Storage & Transfer

- **User-Selectable Storage Interval.** Choose 1, 5, 10, 15, 30, 60 or 120 minutes. Store up to six months' worth of data depending on the storage interval.
- **WeatherLink Models with Standard Data Logger.** Log and store data, even when the data logger is not connected to your PC. Transfer the data as often as you like, or leave the software running to transfer it automatically each day.
- **Internet Protocol (IP) Model.** Upload your weather data to the Internet within minutes. No web skills required—WeatherLinkIP does all the work for you!

Alarm Output & Irrigation Control Models.

Both include our standard data logger plus a connector block that allows you to connect to your irrigation system, or to a heater, fan or other device.

- **Streaming Data Logger Models.** Provide a continuous stream of data to a PC or to a ham radio with a TNC modem.

WeatherLink with Standard Data Logger

Our most popular models, for everyone from the home weather buff to the most demanding scientific user. Available in versions for both PC and Mac. (Mac versions do not include all features; see the "Notes" in the chart on page 22.) All models include data logger, download cable, software on CD, *Getting Started Guide* and on-line help. (Envoy8X is compatible only with the 6510USB and 6510SER.)

WeatherLink for Vantage Pro2 and Vantage Vue
6510USB Windows USB Version
6510SER Windows Serial Version
6520 Mac® OS X Version



Data logger fits neatly into all Vantage Pro2, Vantage Vue, and Envoy models. (Appearance varies depending on model.)

Easily view your weather data on the web

WeatherLink.com is Davis' global weather network with thousands of weather stations reporting. Each reporting station has its own page on the site and is shown on the map as a temperature-color-coded dot that makes it easy to see temperatures worldwide. Click on a dot to see current weather conditions for that station. Each WeatherLink.com account also includes a private page with enough storage capacity to store up to two years' worth of weather data.



WeatherLinkIP data logger installed in a Vantage Vue console.

Adding your station to the WeatherLink Network is as simple as "plug-and-play"—no web skills needed! Simple configuration steps are required to upload to third-party sites or set e-mail alert conditions.

On WeatherLink.com you can:

- Automatically upload data to third-party weather sites including CWOP (Citizen Weather Observer Program), Weather Underground, the GLOBE Program and more.
- Get e-mail alerts of current weather conditions or simple alarm conditions.
- Download the data to your PC for all the same powerful charting, graphing and analysis of WeatherLink software. Extra User License Kits allow you to download the data independently to multiple PCs—ideal for schools, agriculture, scientific fieldwork and remote locations.
- Store four times the data that can be stored on your data logger alone.
- View your data on the WeatherLink.com map or your iPhone or Android app.
- Allow others to view your current weather data, or flag your page as private.

Free Mobile Apps

See your WeatherLink Network station's data on your smartphone. Scan the applicable QR code below or search for WeatherLink on iTunes or the Google Play Store.



6556 WeatherLink iPhone App



6557 WeatherLink Android App

Three ways to join the WeatherLink Network:

WeatherLinkIP

You can post your weather data directly to WeatherLink.com without a PC using WeatherLinkIP. Simply plug the data logger into the back of your Vantage Pro2 or Vantage Vue console, or Weather Envoy and connect the cable to your cable/DSL/wireless broadband router. Within minutes, you'll be able to see your weather data live on the Internet. WeatherLinkIP uploads your data automatically even when your PC is not running—in fact, a PC is not even required to upload data! Includes data logger, download cable, software on CD, *Getting Started Guide* and on-line help. **Not compatible with Envoy8X. A router or hub and Internet service is required. No annual subscription required.**

6555 WeatherLinkIP



WeatherLink Network Annual Subscription*

for WeatherLink Serial and USB Data Loggers. Makes any Davis weather station (including classic Vantage Pro, Monitor, Wizard and Perception stations) into a WeatherLink.com station. With the annual subscription, your weather data is automatically uploaded to WeatherLink.com as long as your computer is on, and the software is running. **Not compatible with Envoy8X.**

Requires a PC, WeatherLink v6.0 (upgrade for free on www.davisnet.com/support/weather/downloads) and Internet service. Not required for WeatherLinkIP or Vantage Connect.

6558 WeatherLink Network Annual Subscription

6559 WeatherLink Network 3-year Subscription

Vantage Connect

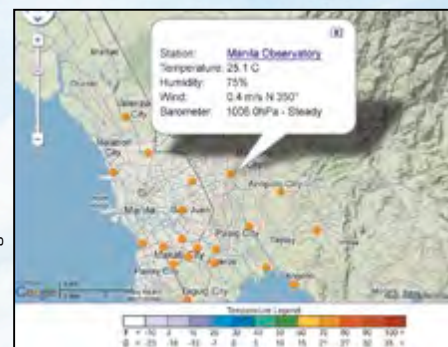
A WeatherLink Network page is included with the purchase of the Vantage Connect. For more details, see page 12.



See it now at www.WeatherLink.com



See your weather data on your private page from any Internet-connected computer.



Click on stations worldwide to see a summary of current conditions.



See detailed, current weather data for any station worldwide.

Critical real-time data right when you need it

WeatherLink for Alarm Output with Connector Block

Now you can automatically turn heaters, fans and other devices on or off using your weather station. For each of four outputs, you can enter up to eight different weather parameters. Enter threshold values for each, select from nine different test conditions, and link the entries together as you choose. For example, you could activate a fan to cool your house—but only if the difference between the inside and outside temperatures is more than 5°F, it's more than 72°F inside and it's between 5:00 p.m. and 6:00 a.m. Our connector block provides the interface between your weather station and an electrical device. For high-power devices, you may also need to add electrical relays (not supplied by Davis). Connection to a PC is not required except for initial setup.

6544 WeatherLink for Alarm Output



WeatherLink for Irrigation Control with Connector Block

Use your weather station to turn your irrigation system on or off automatically. Connector block connects directly to many irrigation systems. For industrial controllers, provides electronic pulses for wind, rain, and ET. For homeowners, looks at rain and ET values to determine when to inhibit watering. Can also set console alarms to inhibit watering when temperatures are too low or winds are too high. ET monitoring requires solar radiation sensor. Connection to a PC is not required except for initial setup.

6560 WeatherLink for Irrigation Control



WeatherLink for APRS with Streaming Data Logger

For ham radio operators, including storm chasers and volunteer weather watchers. Connects a Vantage Pro2 console, Vantage Vue console or Weather Envoy to a ham radio with TNC modem for instant transmission of both your location and the local weather conditions via APRS. Connection to a PC is not required except for initial setup.

6540 WeatherLink for APRS



Choose the WeatherLink model that suits your needs

To get the most out of WeatherLink, choose the model that's right for you. All share the powerful weather data logging and reporting features discussed on page 18, while some add special features designed for specific user groups.

Extra User License Kit includes software on CD and extra user license.

SYSTEM REQUIREMENTS	MODEL	FOR USE WITH	DESIGNED FOR	NOTES	EXTRA USER LICENSE KIT
Windows, USB Windows XP and above	6510USB	Vantage Pro2, Vantage Vue, Weather Envoy or Envoy8X	General Purpose	For PCs with USB connections.	6510X
Windows, Serial Windows XP and above	6510SER	Vantage Pro2, Vantage Vue, Weather Envoy or Envoy8X	General Purpose	For PCs with serial port connections.	6510X
All models with streaming data loggers or connector blocks include all our normal WeatherLink features, plus additional features designed for special purposes. To download one of these models via USB, add our # 8434 USB-to-Serial Cable	6540	Vantage Pro2, Vantage Vue or Weather Envoy	APRS (Ham Radio)	Connects to a ham radio with TNC modem for instant streaming transmission of both your location and the local weather conditions via APRS (Automatic Packet Reporting System).	6510X
	6544	Vantage Pro2, Vantage Vue or Weather Envoy	Alarm Output	Use to turn heaters, fans or other devices on or off depending on weather conditions. (For high-power devices, you may also need to add electrical relays.) Includes connector block.	6510X
	6560	Vantage Pro2, Vantage Vue or Weather Envoy	Irrigation Control	Connects to many irrigation systems. Provides electronic pulses for wind, rain, and ET, or uses the alarm settings in the console. Includes connector block.	6510X
Internet DSL or cable connection and router with free ethernet port. Windows XP and above	6555	Vantage Pro2, Vantage Vue or Weather Envoy	Internet Updates	View downloaded data on your own weather website and be part of the WeatherLinkIP community.	6510X
Mac Mac OS X v 10.1 or above, Intel Mac Compatible	6520	Vantage Pro2, Vantage Vue or Weather Envoy	General Purpose	Does not log data from leaf wetness, soil moisture, solar radiation or UV sensors. Does not include Citizen Weather Observer or GLOBE capabilities. May not be used with E-Mail/Phone Alert or Agricultural/Turf Management Modules.	6520X