

**Tiltable telescopic masts**

Designed for the installation of meteorological measuring devices.

They are made in aluminum (AlMgSi1)

This telescopic masts can be used in conjunction with a corresponding tilting device which can be fixed on the ground or on a wall.

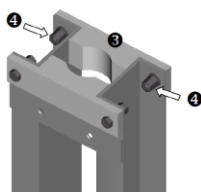
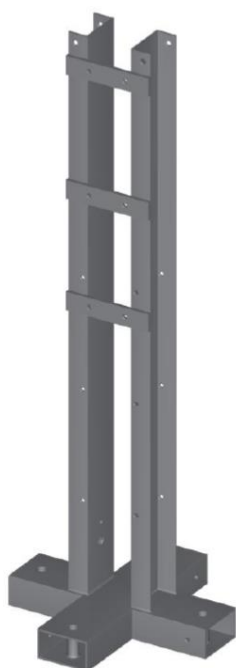
There are no guying ropes needed.

Order No	Technical data	
4.3179.30.080	Height	4 m
	Tube diameters	80 / 71 mm
	Transport length	2,4 m
	Weight	15 kg

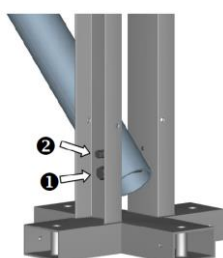
Order No	Technical data	
4.3180.30.090	Height	6 m
	Tube diameters	90 / 80 / 71 mm
	Transport length	2,8 m
	Weight	16 kg

Order No	Technical data	
4.3181.30.116	Height	10 m
	Tube diameters	116 / 102 / 90 / 80 / 71 mm
	Transport length	3,6 m
	Weight	43 kg

Order No	Technical data	
4.3181.30.132	Height	12 m
	Tube diameters	132 / 116 / 102 / 90 / 80 / 71 mm
	Transport length	4,0 m
	Weight	67 kg



③ : Flange
④ : Flange fixing screws



① : Swivel axis
② : Fixing screws



Tilting device for ground mounting

The tilting device serves as a stand for a telescopic mast. The telescopic mast and tilting device are free-standing and therefore do not require any guying. For maintenance purposes, the telescopic mast can be tilted using a cable winch. (supplementary accessory – see below)

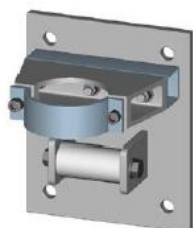
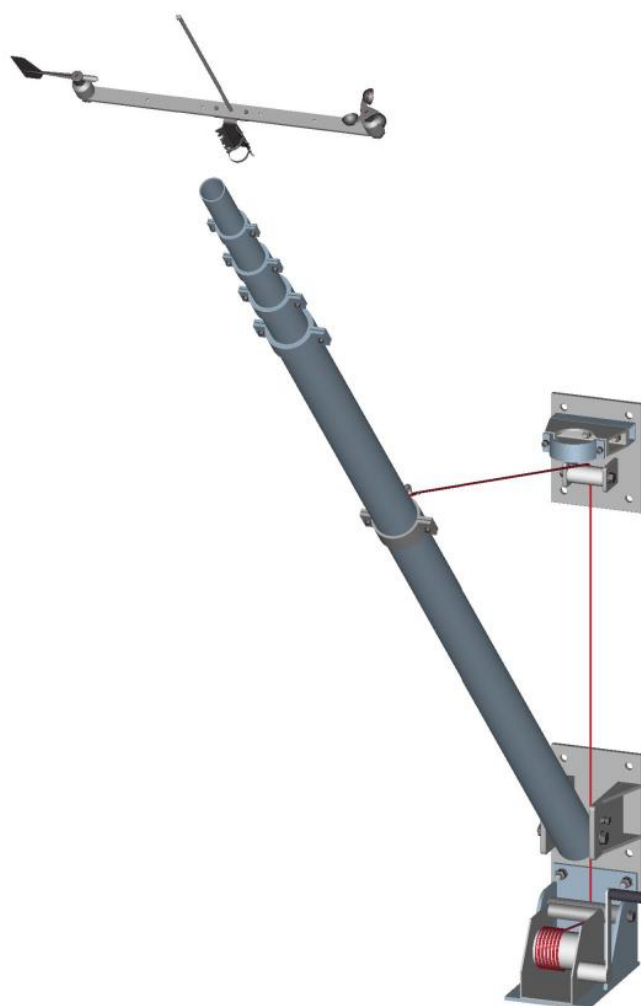
The parts are made of galvanized steel and all needed parts for mounting on a solid ground structure (i.e. on a concrete slab), are included.

Order No	Technical data	
4.3181.03.080	Suitable for	4 m mast
	Height	1,58 m
	Surface on ground	45 x 45 cm
	Weight	60 kg

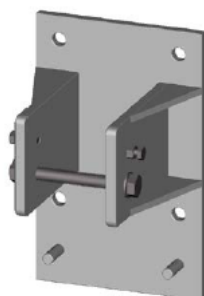
Order No	Technical data	
4.3181.03.090	Suitable for	6 m mast
	Height	1,58 m
	Surface on ground	45 x 45 cm
	Weight	60 kg

Order No	Technical data	
4.3181.03.116	Suitable for	10 m mast
	Height	1,58 m
	Surface on ground	45 x 45 cm
	Weight	60 kg

Order No	Technical data	
4.3181.03.132	Suitable for	12 m mast
	Height	1,58 m
	Surface on ground	45 x 45 cm
	Weight	70 kg



Upper mast holder



Lower mast holder

Tilting device for wall mounting

The tilting device is used to attach the telescopic mast to a wall. For maintenance purposes, the telescopic mast can be tilted using a cable winch. (supplementary accessory – see below)

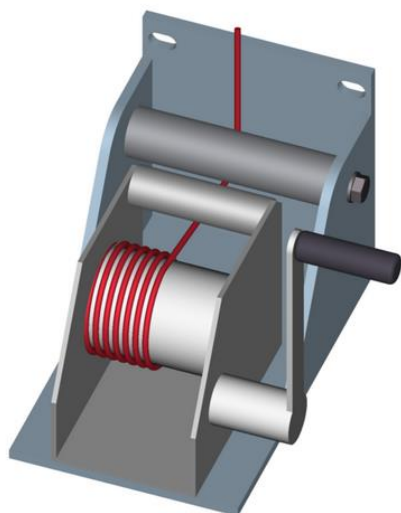
The parts are made of galvanized steel and all needed parts for mounting on a wall are included.

Order No	Technical data	
4.3181.13.080	Suitable for	4 m mast
	Holder sizes	300 x 250 mm 400 x 250 mm
	Weight	60 kg

Order No	Technical data	
4.3181.13.090	Suitable for	6 m mast
	Holder sizes	300 x 250 mm 400 x 250 mm
	Weight	60 kg

Order No	Technical data	
4.3181.13.116	Suitable for	10 m mast
	Holder sizes	300 x 250 mm 400 x 250 mm
	Weight	60 kg

Order No	Technical data	
4.3181.13.132	Suitable for	12 m mast
	Holder sizes	300 x 250 mm 400 x 250 mm
	Weight	60 kg

**Rope winch for tilting device**

The rope winch serves as an assembly aid when only a few people are available to erect the extended telescopic mast.

Used only for erection and tilting action.
(not suited for continuous installation)

Order No	Technical data	
4.3182.03.090	Suitable for	mast 4 m & 6 m
	Ø tube clamp	90 mm
	Weight	23 kg

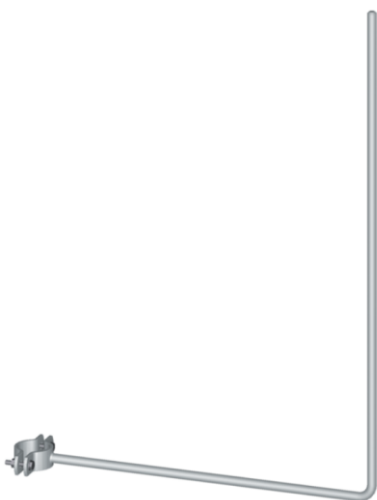
Order No	Technical data	
4.3182.03.116	Suitable for	mast 10 m
	Ø tube clamp	116 mm
	Weight	23 kg

Order No	Technical data	
4.3182.03.132	Suitable for	mast 12 m
	Ø tube clamp	132 mm
	Weight	24 kg

Lightning rod for Tiltable telescopic mast

To be mounted additionally at the telescopic mast, tube or traverse. Protects the sensors, installed on the mast, against damages caused by lightning strokes.

The mast itself is used to evacuate the lightning energy. A proper grounding must be connected at the bottom of the mast.



Order No	Technical data	
4.3100.99.170	Suitable for	Ø 71 mm tube
	Extension	56 cm
	Height	1,5 m
	Material	Galvanized steel
	Weight	4 kg