



Product description

The LOG200 TC allows precise monitoring and recording of one to 3 temperatures via an internal sensor and the possibility of connecting one or 2 external sensors. The instrument is designed for use in the area of transport of delicate products, cold rooms, server rooms or mandatory test protocols. The unit is also suitable for temperature monitoring in rooms and outdoors as a weather thermometer and for ground temperatures, where temperatures can be monitored over long periods of time.

The logger can accomplish up to 60.000 records. Via an USB interface, the determined data can be automatically output as a PDF file to a PC.

A measuring interval of 15 minutes is pre-programmed. Optionally, the download of configuration software is possible. With this software, the storage interval can be set from 10 seconds to 24 hours.

An integrated motion detector records and documents vibrations, for example, when moving, or when opening and closing windows or doors.

Below the display is a status and alarm LED light.

Maximum and minimum values are indicated, as well as an average function with a time marker.

When values exceed or fall below certain set ranges, an alarm is triggered.

The logger is jet-proof to IP 65 and complies with EU standard 12830.

The device is made in Germany. An ISO certificate is included.



Functions

- Monitoring of internal + 2 external temperatures
- Status- and Alarm-LEDs
- Memory for 60.000 records
- MAX / MIN / AVG function, time marker
- Plug & Play - no software required (pre-programmed 15 minutes interval)
- Automatic output as PDF-file, optional configuration software download
- Configurable storage interval (10 sec. up to 24 hrs.)
- HI / LO alarm, motion sensor for shock recording e.g. change of location or door and window opening
- Jet-proof to IP65
- Compliant with EN 12830
- USB Interface
- Delivered with wall mounting holder and ISO certificate

Technical Data	
Delivery contents	Data logger, wall mounting holder, battery, ISO certificate, manual, 2 external sensors
Measuring range (internal meas.)	-40...+70°C
Measuring range (external meas.)	-40...+150°C
Accuracy	± 0,5°C (-10°...+40°C), otherwise ± 1 °C
Resolution	0,1°C
Response time	Approx. 10 min. (63%) / approx. 30 min. (90%)
Material	Plastic
Mounting	Wall mounting
Batteries	1x 3,6 V 1/2 AA (included in delivery)
Batteries life-time	Approx. 4 years (with measuring interval > 15 minutes)
Dimensions	(L) 43 x (B) 21 x (H) 92 mm
Dimensions with holder	(L) 49 x (B) 30 x (H) 98 mm
Weight	60 g

Temperatures logger LOG200 TC



LOG200_21010339_2021-02-11T171855.PDF

LOG200 SN 20021010339 V 04.80

Kritech Test 1



Konfiguration/Configuration

Benutzer/Operator: 00:01:00
Intervall/Interval: Taste/Button. Gegen Neustart gesperrt/Locked against restart
Start möglich durch/Start possible by: 00:00:00
Startverzögerung/Start delay: 00:00:00
Stopp möglich durch/Stop possible by: USB Verbindung/USB connect
Alarm/Alarm: Keine Alarme gesetzt/No Alarms set

Zusammenfassung/Summary

Startzeit/Start time: 11.02.2021 17:18:58
Stoppzeit/Stop time: 11.02.2021 20:49:58
Datensätze/Records: 212
Temperatur/Temperature: Min 12.3 °C Avg 16.2 °C Max 22.7 °C
Start durch/Start by: Taste/Button
Stopp durch/Stop by: USB Verbindung/USB connect
Dauer/Duration: 03:31:00

Temperatur/Temperature

Markierung/Mark

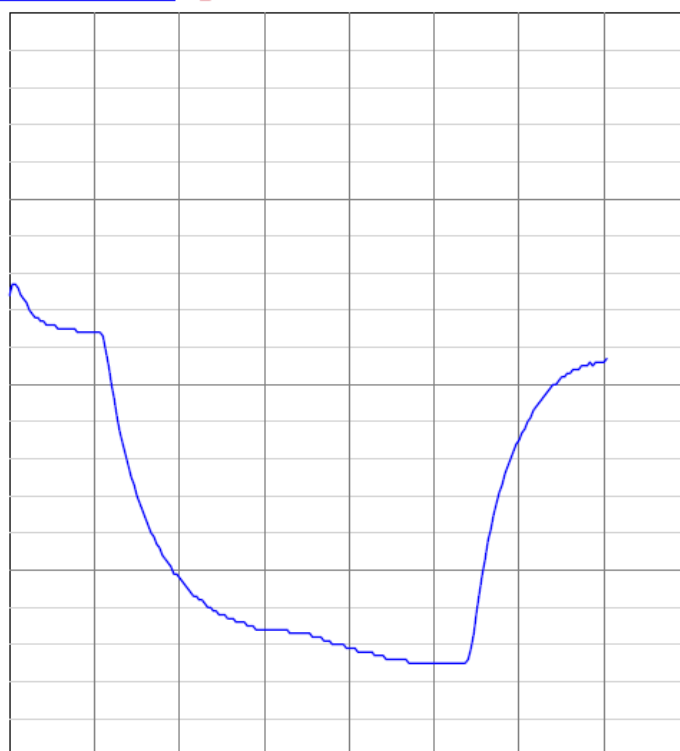
30.0 °C

25.0 °C

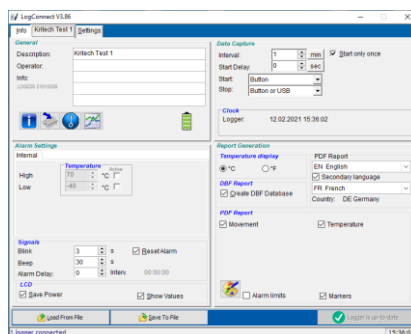
20.0 °C

15.0 °C

10.0 °C



Bewegungssensor/Move sensor
11.02.2021 17:18:58 11.02.2021 17:48:58 11.02.2021 18:18:58 11.02.2021 18:48:58 11.02.2021 19:18:58 11.02.2021 19:48:58 11.02.2021 20:18:58 11.02.2021 20:48:58 11.02.2021 21:18:58



DATE/TIME	TEMPERATURE	EVENTS
11.02.2021 21:59	15.4	02
11.02.2021 22:00	17.0	02
11.02.2021 22:01	17.7	00
11.02.2021 22:02	18.0	00
11.02.2021 22:03	18.1	00
11.02.2021 22:04	18.1	00
11.02.2021 22:05	18.2	00
11.02.2021 22:06	18.2	00
11.02.2021 22:07	18.2	00
11.02.2021 22:08	18.3	00
11.02.2021 22:09	18.3	00