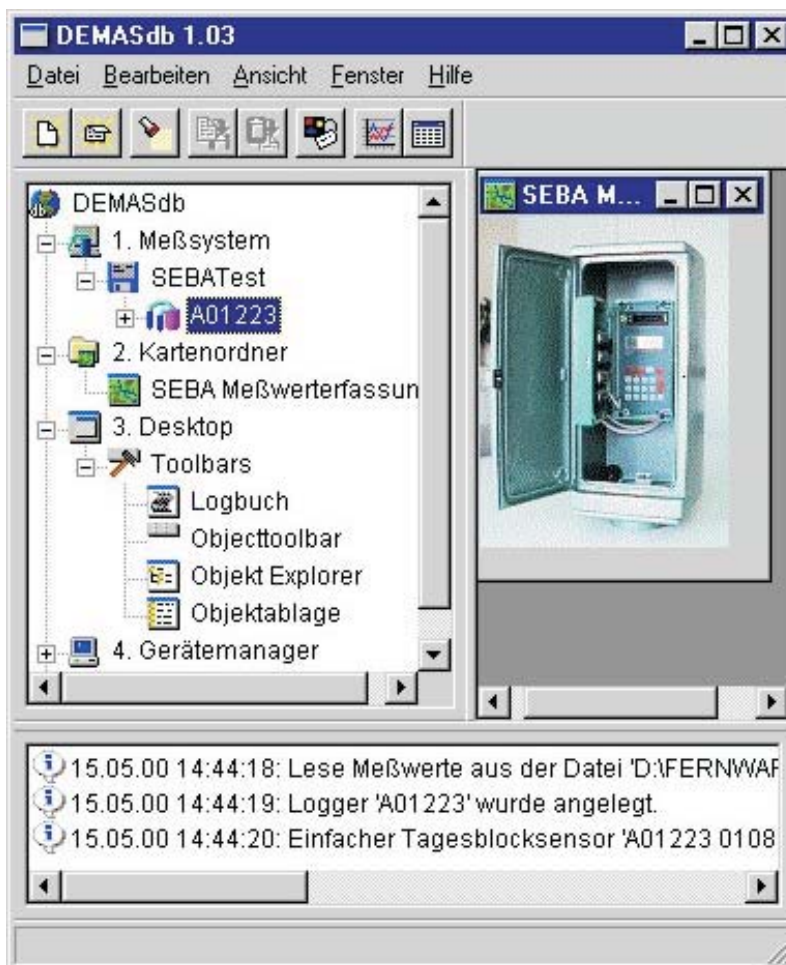




Data Evaluation Management Alarm Software DEMASdb

DEMASdb is a graphical data base surface, concipated especially for acquisition, storage and administration of measuring data, also suitable for big data quantities. The measuring data will be stored in a delivered data base.

Alternatively any SQL-data bases (Oracle, Informix, MS-SQL-Server) can serve as data base. Links to data bases are realised with SQL and ODBC.



Multi-user capability

In the concept great importance has been attached to flexibility and multi-user capability. So many users can access the data base, whereas it is guaranteed, that all data remain consistent.

Configurable user rights enable to impose restrictions to partial- or non-authorized users. For the different users, the operation profiles can be adjusted to their respective application.

The OLE-interface of DEMASdb enables to assume and administer other documents, for example directly from MS-Office and a multitude of other Office-packages.



System features in survey

DEMASdb is a 32-bit-application and runs under Windows NT, Windows 2000 and Windows XP.

DEMASdb divides its work into several processes, so that a usage also during the call of measuring data is possible.

DEMASdb can import different ASCII-data. Foreign formats can be implemented.

DEMASdb administrates different station parameters to the single stations. The kind and quantity of the station parameters can be adjusted during running DEMASdb.

DEMASdb offers the possibility to calculate logical measuring values out of raw data by means of displayed tables or mathematical formulas. This can either be effected by reading or exporting/indicating. This has effects, in case the formula, resp. the displayed table are changeable.

In the measuring value data base, the raw data, as well as the mathematically calculated measuring values will be stored redundant or non-redundant. Each measuring value contains an identification, whether it has been changed manually or checked and with which instrument type the value had been measured.

DEMASdb administrates different log books, which record the events of the instruments and also a protocol of all user actions into the data base.

Due to the OLE-connection, DEMASdb can administrate different documents and formats. Moreover, also while running, special tables can be created and integrated, which seamless fits into the measuring system. Of course all information can be indicated, changed and printed.

DEMASdb has different output interfaces, so that year books and reports can be established.

Furthermore, the evaluation modules MGDMS and MLMDS have been integrated into the DEMASdb, which allow an extremely comfortable handling of the measuring series. So it is also possible, to handle the measuring series very simple.

DEMASdb can be connected to existing SQL-data bases or will be delivered with a standard data base.

DEMASdb administrates user rights, in order to protect the data against unauthorized access.

DEMASdb archives the measuring data and documents and so it serves as comprehensive information instrument.

DEMASdb can administer big data quantities.

DEMASdb works with the well-known software packages of SEBA Hydrometrie and/or software packages of foreign manufacturers, which offer a flexible and general interface.

With DEMASdb you keep your data in view, due to the clearly arranged administration.

Simple and intuitive operation with DRAG and DROP.

Ergonomic adjustment of the user profiles for the different users.

With DEMASdb you have the possibility to record your measuring data with different hardware components of SEBA Hydrometrie or other manufacturers, respectively you can adjust DEMASdb simply to hardware components of foreign manufacturers.

DEMASdb can easily be expanded due to the modular construction of the system.



SEBA Hydrometrie GmbH

Gewerbestr. 61a • D-87600 Kaufbeuren

Tel.: +49 (0)8341 / 9648-0

Fax: +49 (0)8341 / 9648-48

E-Mail: info@seba.de

Internet: www.seba.de

Germany