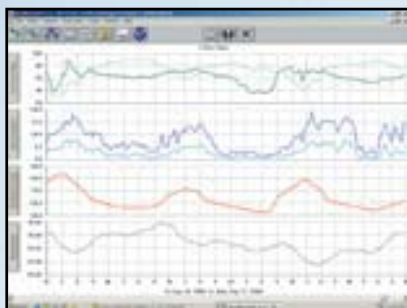


Your weather data, your PC. What could be better?

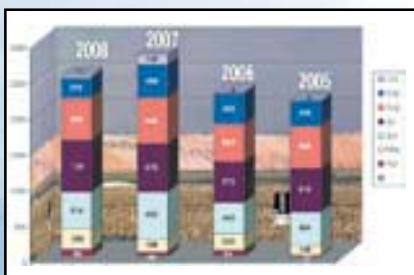
For the ultimate in weather monitoring, add WeatherLink to any of our weather stations. The data logger fits neatly into the weather station console or Weather Envoy, storing weather data even when it's not connected to your PC. Later, download the data and use the software for detailed analysis and graphing. Available in ten different models. Our popular WeatherLink with standard data logger is ideal for most purposes, while other models add special features designed for specific user groups.



Graph data on a daily, weekly, or yearly basis.



View multiple weather variables at the same time to see their relationships.



Use WeatherLink to create your own custom reports and publish them online.

Expanded Reporting

- **More Weather Data.** View weather information not available on the console, including heating degree days, cooling degree days, and fuel-oil demand.
- **Optional Sensor Reporting.** With optional UV and solar radiation sensors, get details on sunburn risk and solar energy.
- **Moon Phase.** With Vantage Pro2 and Vantage Vue, you can see the phase of the moon right on the console. But now even Perception and Weather Wizard III owners can view the phases of the moon using WeatherLink.

Sharing Your Weather Data

- **Create Your Own Reports.** Data can be exported to most popular spreadsheets, databases, and word processing programs.
- **Weather Website.** Create a weather website or post weather conditions to a LAN. Add graphs, text lines, or scrolling ticker tapes, and upload other files (such as webcam images) along with weather data.
- **Weather World 'Round.** Send your URL to news@davisnet.com and we'll add it to our growing list of Davis stations around the world.
- **Citizen Weather Observer Program.** Submit your data to the National Weather Service to help develop improved weather prediction models.
- **The GLOBE Program.** Participate with other schools in an international weather-related program for students from elementary through high school.

Data logger fits neatly into all Vantage Pro, Vantage Pro2, Vantage Vue, Envoy, Weather Wizard III and Perception II models. (Appearance varies depending on model.)



Data Storage & Transfer

- **User-Selectable Storage Interval.** Choose 1, 5, 10, 15, 30, 60, or 120 minutes. Store up to six months' worth of data depending on the storage interval. (Up to four months for Perception or Weather Wizard III.)
- **Standard Data Logger Models.** Log and store data, even when the data logger is not connected to your PC. Transfer the data as often as you like, or leave the software running to transfer it automatically each day.
- **Internet Protocol Model.** Our newest model lets you see your weather data live on the Internet within minutes. No web skills or complicated setup required—WeatherLink does all the work for you!
- **Alarm Output & Irrigation Control Models.** Include our standard data logger plus a connector block that allows you to connect to your irrigation system, or to a heater, fan, or other device.
- **Streaming Data Logger Models.** Provide a continuous stream of data to a PC or to a ham radio with a TNC modem.

Check current conditions at a glance on the instant weather bulletin.

